

Chapter 3: Reading the ProCoder™)R900i™

This chapter provides information on reading the ProCoder™)R900i™.

How to Read

Become familiar with the information available from the meter.

Example: 5/8" T-10

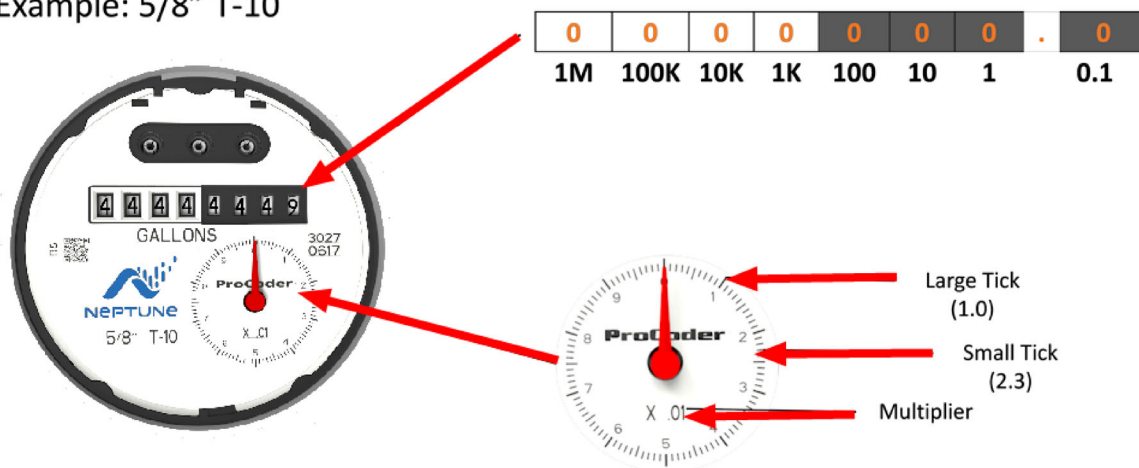


Figure 4 – ProCoder™ Face and Sweep Hand

The sensitive sweep hand provides a visual representation of extreme low flows as well as reverse flows. Depending on the size and type of ProCoder register, a specific multiplier is present. This multiplier, along with the current position of the sweep hand, provides additional digits of resolution that are especially useful for testing.



For further information on reading the ProCoder sweep hand, see the Product Support Document *How to Read the Neptune ProCoder™ Register*.

Common Causes of Leaks

Leaks can result from various circumstances. The following table contains some common causes of leaks.

Table 5 – Possible Leaks

Possible Cause of Leak	Intermittent Leak	Continuous Leak
Outside faucet, garden, or sprinkler system leaking	✓	✓
Toilet valve not sealed properly	✓	✓
Toilet running		✓
Faucet in kitchen or bathrooms leaking	✓	✓
Ice maker leaking		✓
Soaker hose in use		✓
Leak between the water meter and the house		✓
Washing machine leaking	✓	✓
Dishwasher leaking	✓	✓
Hot water heater leaking		✓
Watering yard for more than eight hours	✓	✓
Continuous pet water device in use		✓
Water-cooled air conditioner or heat pump	✓	✓
Swimming pool filled		✓
Any continuous use of water for 24 hours		✓

Check all equipment that uses water to determine where the leak originates.

How to Tell if Water is in Use

To determine if water is in use, complete the following steps:

1. View the mechanical sweep hand.
2. Determine the following conditions. If the sweep hand is:
 - Moving slowly in a clockwise direction, water is running very slowly
 - Moving quickly, water is running
 - Not moving, water is not in use
 - Moving in a counter-clockwise direction, backflow is occurring

If Continuous Leak is Repaired

If you find and repair a continuous leak, complete the following steps:

1. Use no water for at least **15 minutes**.
2. Check the sweep hand.

If the sweep hand is not moving, there is no longer a continuous leak.

If Intermittent Leak is Repaired

If you find and repair an intermittent leak, check the sweep hand after at least **24 hours**.

If the sweep hand is not moving, there is no longer an intermittent leak.